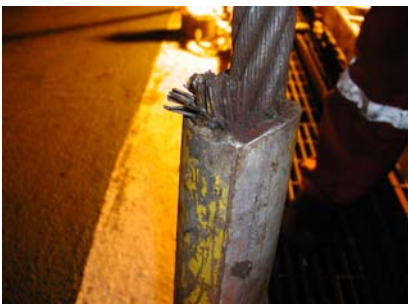


Marine Safety Forum – Safety Flash 06-15

Issued: 24th April 2006

Subject: Hand Injury to Vessel Deck Crew

A vessel was discharging heavy lifts at a MODU and the main block with a heavy lift pennant was in use. The weather was marginal and increasing, but it was within the company guidelines. The deck crew had sanctioned continuation of work just five minutes before the accident occurred. The deck crew consisted of two men, one man tending the wire whilst the other effected the hook on. Due to the vessel rolling, the crane had the apparent motion of lowering and heaving. As it lifted off the deck, the wire slipped through the AB's hand and a section of damaged wires at the top of the aluminium ferrule penetrated the crewman's hand resulting in a very deep cut.



Investigation & Recommendations

1. The weather was marginal but was within the guidelines. The vessel was rolling and the crane was not able to compensate as they were using the main block. The hook actually hit the deck at one point and, in hindsight, this should have been the point where the operation was halted.
2. The crane wire termination was a standard aluminium ferrule which is widely used in the industry. The wire tail has to be present to ensure full wire penetration and although they can be trimmed, it is very difficult and carries a high risk of cutting the standing part of the wire. A recommended solution is to utilize crane pennants for offloading / backloading supply vessels which are fitted with a Flemish or 'super loop' type of termination. The sleeve has a tapered top which encompasses the wire ends. It is suggested that they would only be required on crane pennants and not on normal wire slings.
3. The deck crewman was wearing standard PVC gloves with elastic cuffs which keep the hands dry and warm and allow full mobility, but they have the lowest rating for protection against tearing and puncture. It is recommended that companies ensure that they have the right glove for the right job.